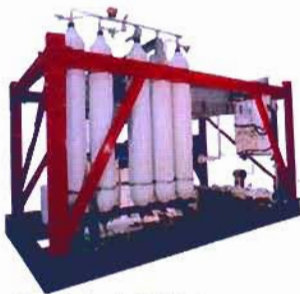


Model : Gastech 800



The Gastech 800-0 is a new addition to the Gastech family of Gardner Denver compressor packages. The design is optimised for CNG refueling, utilizing a proven block design. As a global product the Gastech is capable of complying with international standards. The design uses as many common parts as possible, thus reducing spares holding and simplifying maintenance.

Using the latest air cooling technology enables the compressor to achieve ultra low gas delivery temperature with minimal power. The horizontally opposed design has been balanced for use on CNG allowing the compressor to operate at a high speed, thus giving the greatest flow for a given compressor size without compromising reliability.

Benefits

Reduced wear, excellent reliability, longer life, extended service intervals, minimal vibration and no special foundations. Substantially reduced installation and running costs. Compressors achieve high flows, maintaining low wear. Fully automatic operation and monitoring system. Reduced spares and maintenance. Comprehensive protection of customers process and compressor system. Saves customer money in plant downtime and lost. A rugged highly engineered system with long operational life expectancy and high energy efficiency. Quality, durability and reliability. A truly global product. Low cost shipping and simple handling. Saving money by eliminating future capital expenditure.

Features

- Range of suction pressures with high delivery flow
- Well balanced horizontal cylinder configuration
- Air cooled
- 3 & 4 single acting compression stages
- High efficiency piston rings
- Double throw crankshaft
- Simple valve access
- Low lift plate valves
- Designed for balanced high speed running
- Microprocessor based control system
- Commonality of parts across the range
- Oil monitoring and protection circuit
- Multiple fault protection instruments
- Remote monitoring option
- Integral instrument panel
- Gas pressure gauge each stage
- Crankshaft driven oil pumps
- High efficiency inter and after stage coolers with moisture separators and automatic drains
- Belt driven 50 or 60Hz electric motor
- Heavy duty design
- Compliance with International Standards
- Designed to fit within an ISO shipping container
- World-wide pre order consultancy
- World-wide after sales and service support

Open Set Weights & Measures

Dimensions	mm	Inches
Width	2200	87
Length	4000	157
Height	3285	129
Weight	6600 - 9000 kg	14,550-19,841 lb

Materials

Crankcase : Cast Iron
 Crankshaft : Nodular Iron
 Con Rods : Nodular Iron
 Bearings :
 Main : Spherical rolling element
 Big End : Copper lead over plated with tin
 Small End : Lead bronze
 Pistons : LP-Aluminium, HP-Steel

Options Available

Total solution : Supply from gas inlet to dispenser nozzle
 Enclosure : Acoustic or non acoustic weatherproof enclosure
 Gas Inlet shut off valve : Specifically required by the UK market.
 Ancillaries : Starters, control panels, storage vessels, cooling water circuits, filtration, gas dryers
 Monitoring : Remote monitoring system
 Assembly : Stand-alone, sub base, full skid package.
 Services : Commissioning, installation and training tailored to your needs

Typical Performance Data : Based on dry natural gas (refer to factory for precise calculations).

Model	Flow Capacity (FGD) @ max inlet pressure		Suction Pressure		Discharge Pressure Normal 250barg Maximum 350barg		Absorbed Power @ 250 bar	
	cfm	m3/hr	Psig	Barg	Psig	Barg	HP	KW
✓ GT800-0	471	800	0 - 5.8	0 - 0.4	3625	250	227	206
GT800-2	471	800	5.8 - 29	0.4 - 2.0	3625	250	227	169
GT800-5	471	800	29 - 73	2.0 - 5.0	3625	250	199	148
GT800-7	471	800	73 - 101	5.0 - 7.0	3625	250	190	141
GT800-16	471	800	101 - 232	7.0 - 16.0	3625	250	148	110

Leaders in
Compressor Technology

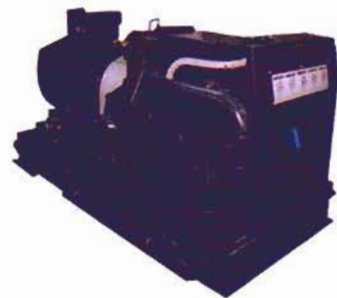


G-gas

ENERGY PAC
PRODUCT

www.g-gas.net

Model : Gastech 360



Gardner Denver Ltd. is one of the world's most innovative companies in reciprocating compressor design, research, development and manufacture. Our one hundred years of experience in the industry has allowed us to develop a range of compressors leading the field for CNG refuelling station design.

General Description:

Cooling	: Water-cooled
Single-acting pistons Speed	: 1500 rpm max
4 Stages	: Max pressure 350 bar (5100 psi)
Frame power	: Up to 110 kW (150 HP)
Oil Pump	: Pressure lubricated
Cylinders	: Horizontal configuration
Stroke	: 70 mm (2.75 in)

Open Set Weights & Measures

Dimensions	mm	Inches
Width	1190	47
Length	2160	85
Height	1088	43
Weight (excluding motor)	1700 kg	3750 lb

Benefits

Reduced wear, excellent reliability, longer life, extended service intervals, minimal vibration and no special foundations. Substantially reduced installation and running costs. Comprehensive protection of customers process and compressor system. Saves customer money in plant downtime and lost production. A rugged highly engineered system with long operational life expectancy and high energy efficiency. Saving money by eliminating future capital expenditure.

Features

- Well balanced cylinder configuration
- 4 single acting compression stages
- Replaceable cylinder liners
- High efficiency piston rings
- Double throw crankshaft
- Simple valve access
- Low lift plate valves
- Low valve speed
- Low rotational speed
- Oil monitoring and protection circuit
- Multiple fault protection instruments
- Remote monitoring option
- Integral instrument panel
- Gas pressure gauge each stage
- Water monitoring and protection circuits
- Crankshaft driven oil pump
- High efficiency inter and after stage coolers with moisture separators and automatic drains
- 50 or 60Hz electric motor
- Heavy duty design
- World-wide pre order consultancy
- World-wide after sales and service support

Materials:

Crankcase	: SG Iron
Crankshaft	: SG Iron
Con Rods	: Aluminium
Bearings	:
Main	: Steel backed white metal (shell)
Big End	: Steel backed aluminium
Small End	: Lead bronze
Pistons	: LP-Aluminium, HP-SG Iron

Options Available

Control	: Discharge pressure unloading, suction pressure unloading, spillback valve.
Drive Arrangements	: Direct coupled as standard, belt and gear box optional.
Primary Driver	: Electric motor, diesel engine, natural gas engine.
Protection Devices	: Suitable for Zone 1 / Zone II areas, gas group IIA.
Monitoring	: Relay logic, PLC, HMI, condition monitoring, telematics.
Ancillaries	: Starters, control panels, storage vessels, cooling water circuits, gas dryers
Assembly	: Stand-alone, sub base, full skid package.
Drying	: Integral membrane or pressure swing absorption or loose fill desiccant.
Filtration	: Molecular sieve, hopcalite, coalescers and particle filtration.

Typical Performance Data: Based on dry gas (refer to factory for precise calculations).

Flow Capacity (FGD) @ max inlet pressure		Suction Pressure		Discharge Pressure		Absorbed Power		Speed
cfm	M3/hr	Psig	Barg	Psig	Barg	HP	KW	rpm
215	366	0-5	0-0.35	0-5100	0-350	148	110	1500

energy works wonder
www.ENERGYPAC.com

Sole distributor in Bangladesh:
 (Oil and Gas Fields Service Division)

Energypac Power Generation Limited

79, Shahid Tazuddin Sharani, Tejgaon I/A, Dhaka-1208, Bangladesh. Phone : 880-2-9892035 (Auto Hunting)
 Fax : 880-2- 8813262, E-mail : makid.oilgas@energypac.com

G-gas

ENERGYPAC
 P R O D U C T
 www.g-gas.net